

---

**COURT  
MEWS** SE13

---

HITHER GREEN

**Court Mews**

Hither Green  
London  
SE13 6SS

**WELCOME TO COURT MEWS**  
**A MODERN GATED DEVELOPMENT OF SIX**  
**STUNNING MEWS STYLE HOUSES**  
**IN ONE OF SOUTH EAST LONDON'S MOST DESIRABLE LOCATIONS**  
**HITHER GREEN SE13**



## An exclusive collection of two bedroom ultra-modern family homes, offering spacious and versatile accommodation to meet the needs of everyday living.

### Kitchens

Contemporary handleless kitchen units  
Quartz worktops  
Bosch oven & hob  
Bosch integrated dishwasher  
Bosch and Indesit integrated fridge/freezer

### Bathrooms/en-suites

Porcelanosa sanitaryware  
Thermostatically controlled shower  
Porcelanosa floor and wall tiling  
Chrome towel rail

### General

Underfloor heating throughout ground floor  
Hard wired for satellite TV  
Fitted wardrobe to master bedroom  
Neutral carpets to bedrooms  
Porcelanosa floor tiling to ground floor  
Wild flower roofs  
Photovoltaic panels

### Peace of mind

Hard wired burglar alarm  
10 Year Buildzone Warranty



All homes benefit from modern open-plan kitchen/living arrangements to the ground floor with underfloor heating throughout. The bespoke kitchens have been carefully designed to blend into the dining and entertaining spaces which then lead naturally onto the private gardens.

To the first floor, both bedrooms are generous in size with the master benefiting from built-in wardrobes and en-suites to selected plots. The family bathrooms offer white modern sanitaryware with Porcelanosa floor and wall tiling.







# Site plan.



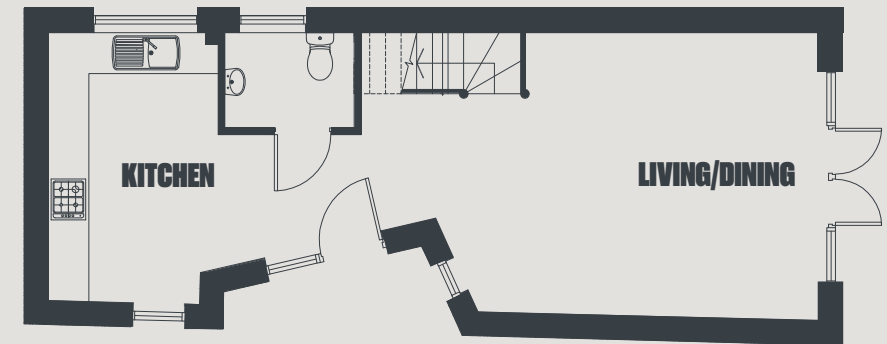
### Key

-  House
-  Garden

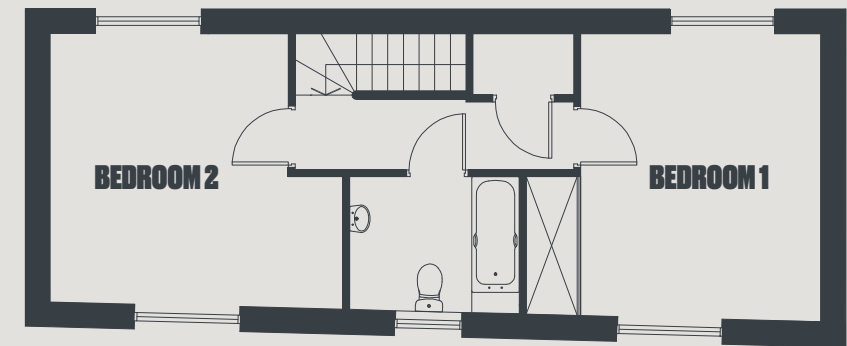


# 1

953 sqft  
88.5 sqm

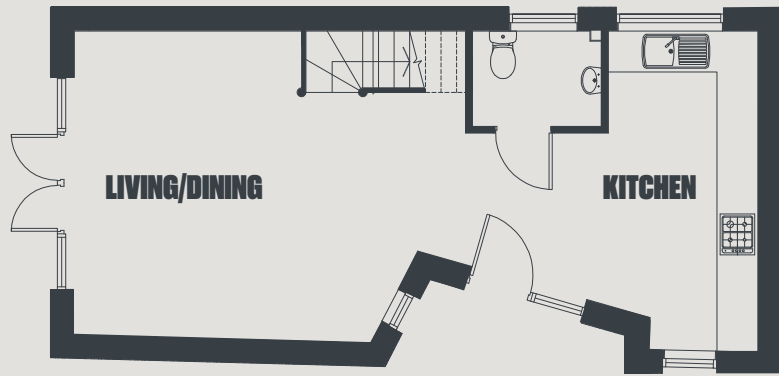


GROUND FLOOR

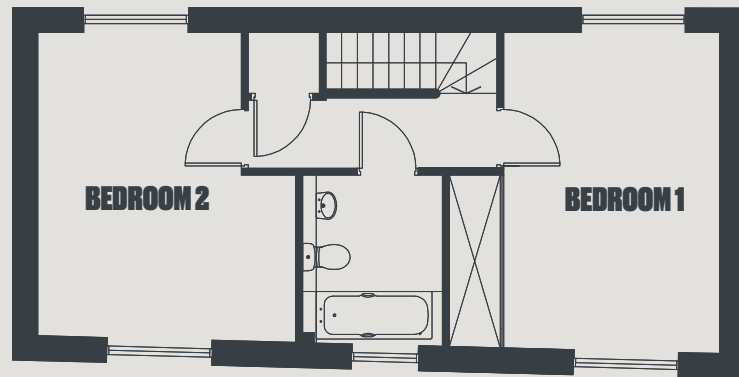


FIRST FLOOR

Ground floor	First floor
<b>Kitchen</b> 2.9m x 3.9m 9'6 x 12'10	<b>Bedroom 1</b> 4.1m x 4.2m 13'5 x 13'9
<b>Living/Dining</b> 5.9m x 4.1m 19'4 x 13'5	<b>Bedroom 2</b> 3.5m x 3.9m 11'6 x 12'10



**GROUND FLOOR**

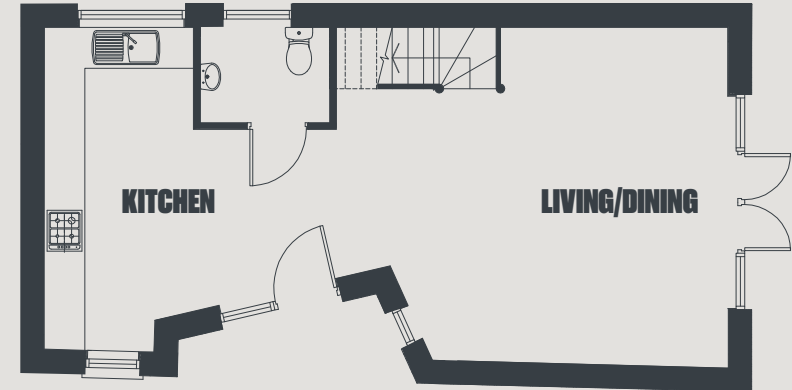


**FIRST FLOOR**

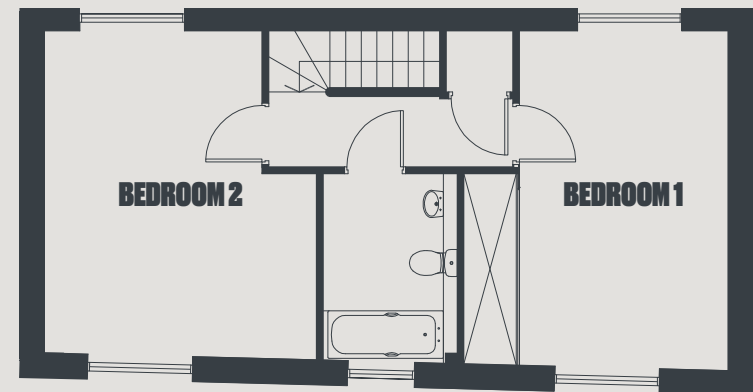
**2**

949 sqft  
88.2 sqm

Ground floor	First floor
<b>Kitchen</b> 2.8m x 4.7m 9'2 x 15'5	<b>Bedroom 1</b> 3.2m x 4.7m 10'6 x 15'5
<b>Living/Dining</b> 5.3m x 4.5m 17'5 x 14'9	<b>Bedroom 2</b> 3.9m x 4.5m 12'10 x 14'9



**GROUND FLOOR**



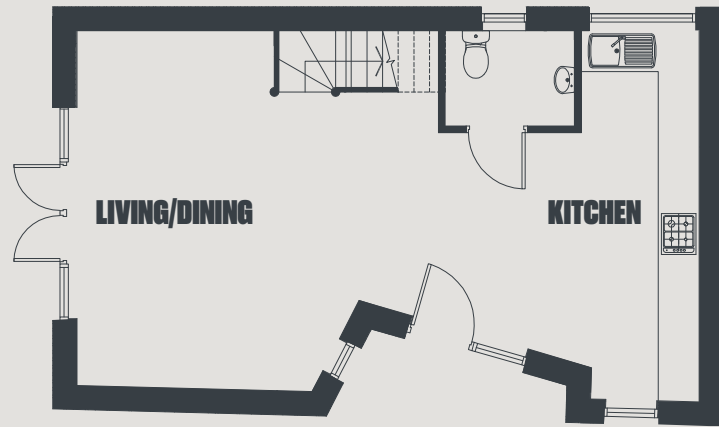
**FIRST FLOOR**

**3**

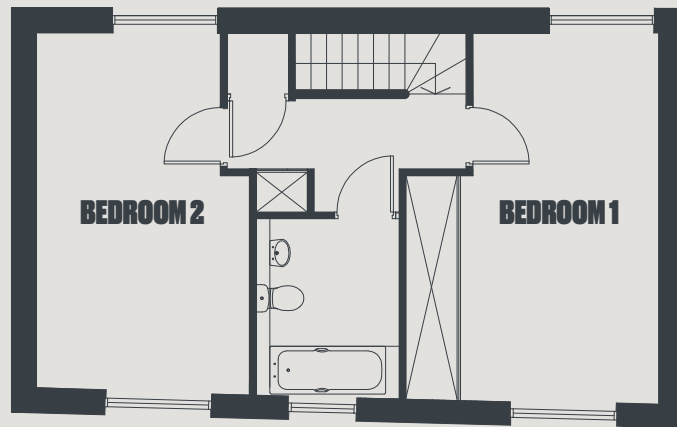
1,009 sqft  
93.7 sqm

Ground floor	First floor
<b>Kitchen</b> 2.4m x 4.7m 7'10 x 15'5	<b>Bedroom 1</b> 3m x 5m 9'10 x 16'5
<b>Living/Dining</b> 5.2m x 4.9m 17'1 x 16'1	<b>Bedroom 2</b> 3m x 4.7m 9'10 x 15'5





**GROUND FLOOR**

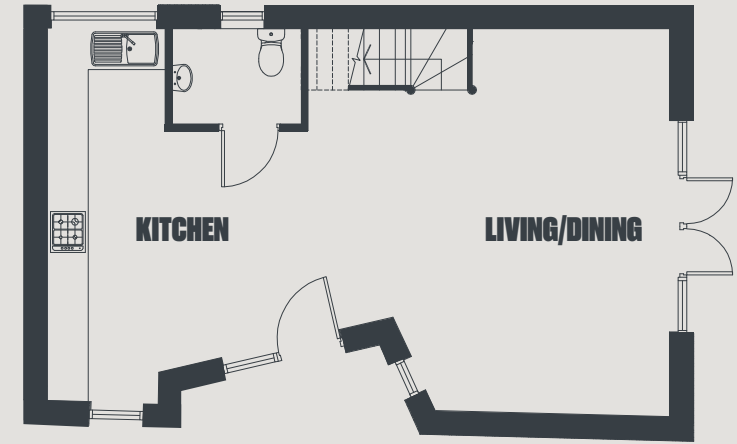


**FIRST FLOOR**

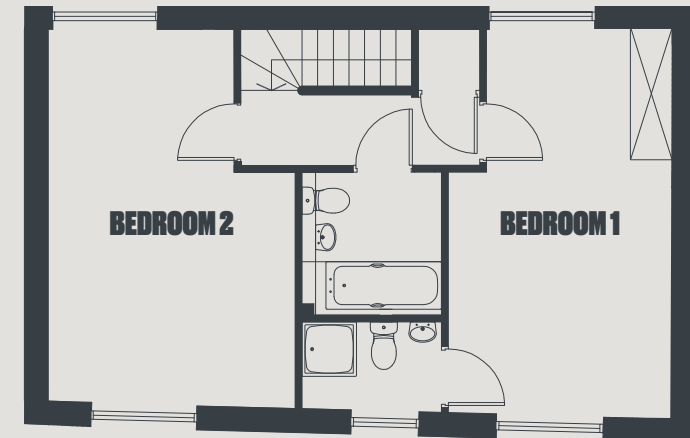
**4**

**1,004 sqft**  
**93.3 sqm**

Ground floor	First floor
<b>Kitchen</b> 2.2m x 4.4m 7'3 x 14'5	<b>Bedroom 1</b> 3.7m x 5.5m 12'2 x 18'1
<b>Living/Dining</b> 4.5m x 5.3m 14'9 x 17'5	<b>Bedroom 2</b> 3.1m x 5.3m 10'2 x 17'5



**GROUND FLOOR**

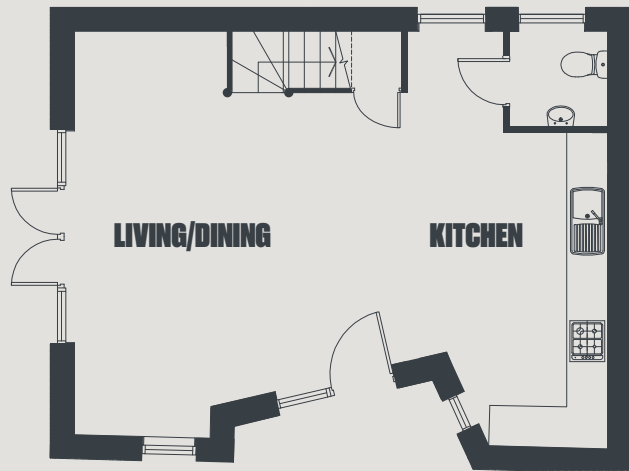


**FIRST FLOOR**

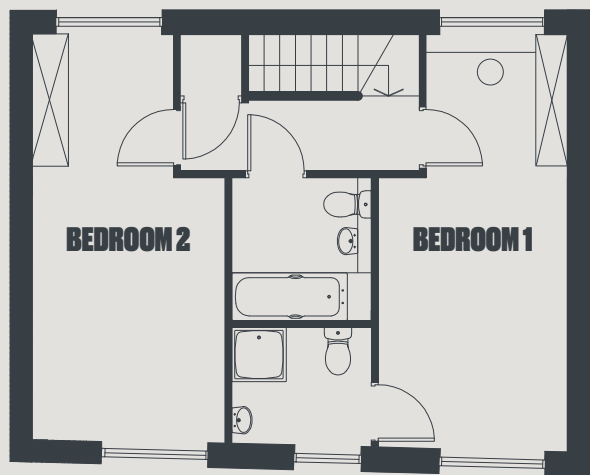
**5**

**1,052 sqft**  
**97.7 sqm**

Ground floor	First floor
<b>Kitchen</b> 2.5m x 5.5m 8'2 x 18'1	<b>Bedroom 1</b> 3.6m x 5.5m 11'10 x 18'1
<b>Living/Dining</b> 4.5m x 5.7m 14'9 x 18'8	<b>Bedroom 2</b> 4.4m x 5.9m 14'5 x 19'4



**GROUND FLOOR**



**FIRST FLOOR**

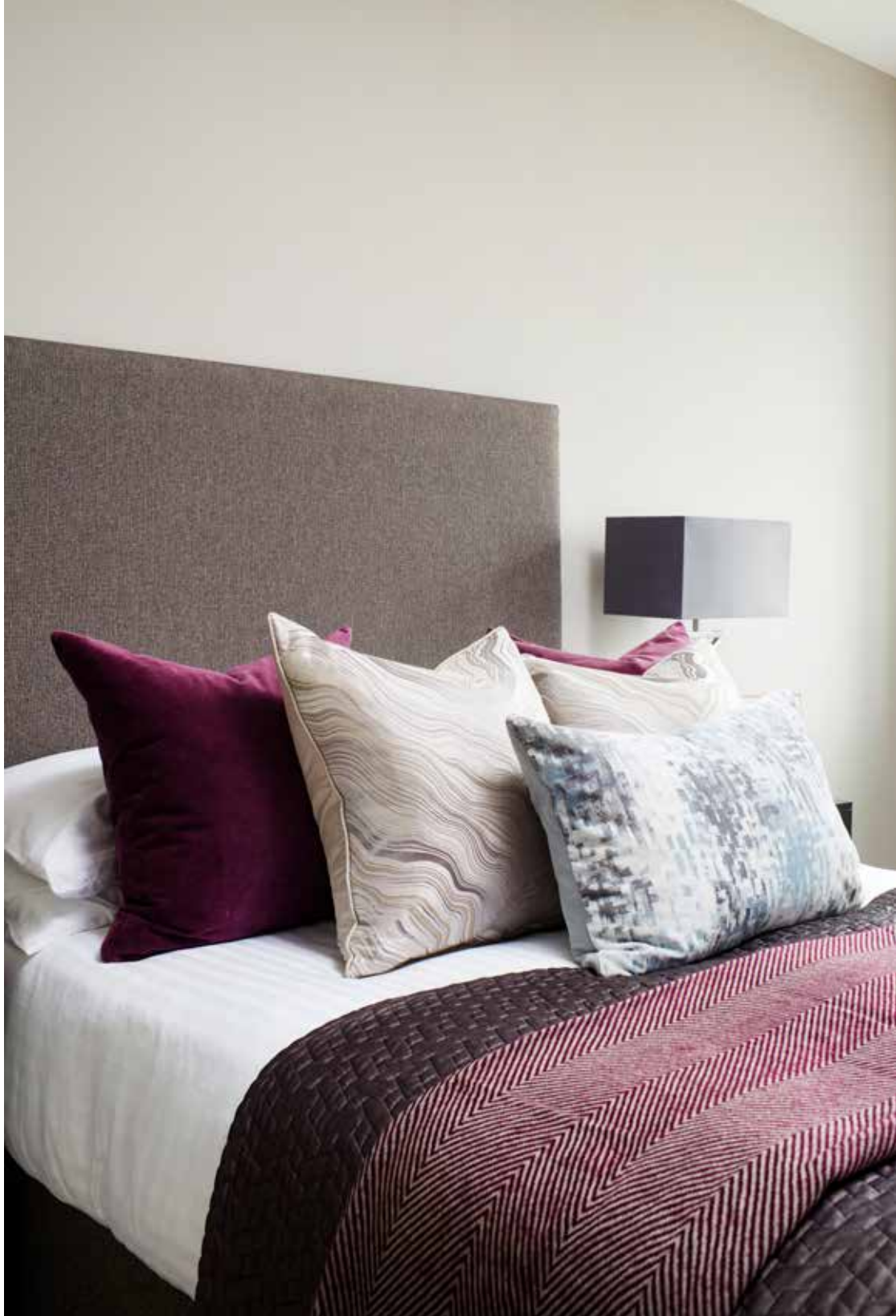
**Ground floor    First floor**

- Kitchen**  
3.6m x 3.9m  
11'10 x 12'10
- Living/Dining**  
4.4m x 5.9m  
14'5 x 19'4
- Bedroom 1**  
2.7m x 5.9m  
8'10 x 19'4
- Bedroom 2**  
2.7m x 6m  
8'10 x 19'8

**6**

969 sqft  
90 sqm





**Both bedrooms are generous in size and benefit from built-in wardrobes and en-suites to selected plots.**



## Local area.

Not only is Hither Green a popular hub for commuters, it is also noted for its village-like feel and community spirit. Offering a rich array of local history, from the famous water tower to the open green spaces of Manor House Park and Mountsfield Park. Local schools boast a number of outstanding Ofsted reports, with the area being dominated by the Brindishe Primary Schools and Trinity Secondary School.



**NEW CROSS**  
**BROCKLEY**  
HONOR **HITHER**  
OAK **GREEN**  
**LEWISHAM**  
**BLACKHEATH**  
**KIDBROOKE LEE**

**Not only is Hither Green a popular hub for commuters, it is also noted for its village-like feel and community spirit.**

**Eat & Drink**

Good Hope  
Cafe Green  
Arlo & Moe  
Archibald's

The Station Hotel  
Ladywell Tavern  
The Lord Northbrook  
The Crown Tavern

Rox Burger  
Carbrera  
Model Market  
Dirty South

**Leisure**

Blackheath  
Greenwich Park

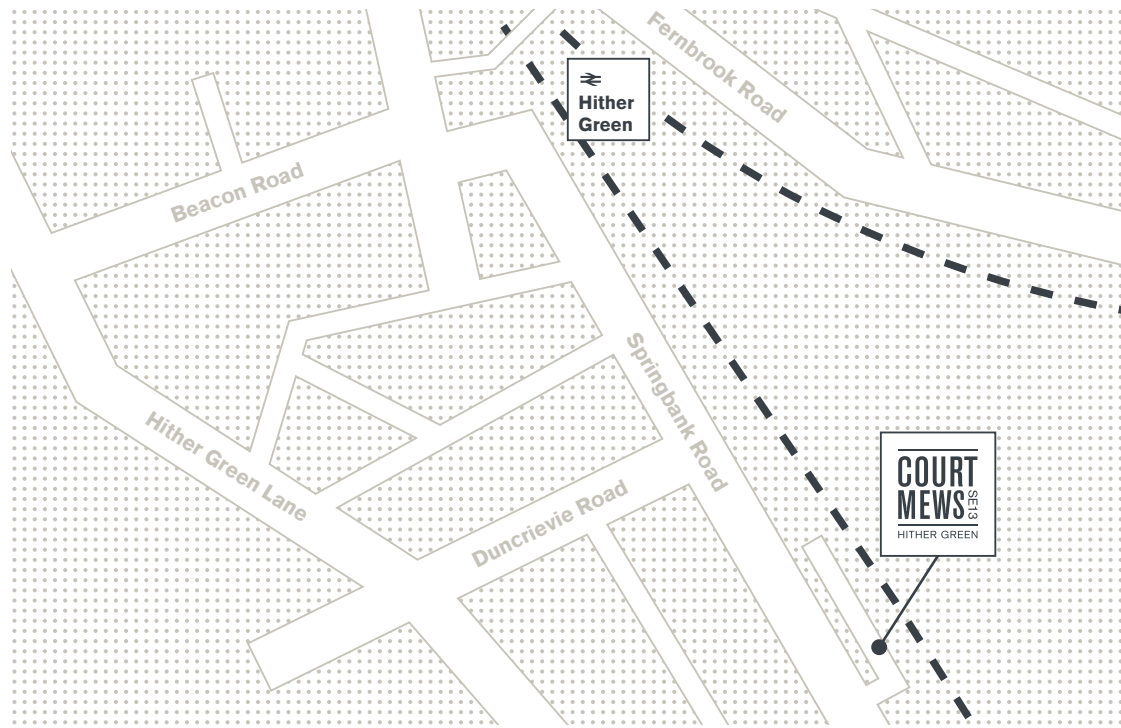
The Albany Theatre  
Deptford Cinema

The Glades Bromley  
Lewisham Shopping Centre

All locations accessible in under 30 mins (source Transport for London).



## Transport.



### By train from Hither Green Station

<b>5 mins</b> to Lewisham	<b>9 mins</b> to London Bridge	<b>19 mins</b> to Charing Cross
<b>10 mins</b> to New Cross	<b>15 mins</b> to Waterloo East	<b>31 mins</b> to Bluewater

Situated only 0.3 miles away from Hither Green mainline station, offering direct routes into a number of Central London's most popular destinations, including: Waterloo East, Charing Cross and London Bridge. The immediate area also boasts excellent bus connections with services to: Lewisham train station, New Cross train station and Canada Water, as well as a regular night bus service to Tottenham Court Road.

---

# COURT MEWS<sup>SE13</sup>

---

HITHER GREEN

020 8315 6996

[acornnewhomes.co.uk](http://acornnewhomes.co.uk)

[newhomes@acorn.ltd.uk](mailto:newhomes@acorn.ltd.uk)



Developed by:



These particulars are provided as a guide to what is being offered and are subject to contract and availability. Whilst showing the general specification and design of the properties we reserve the right and liberty at our discretion to amend or vary. All measurements are approximate and taken at the maximum points and should not be relied upon. Layouts, sizes and specification are not final and may change at the developer's discretion. We advise that any prospective purchasers employ their own independent experts to verify the statements herein. Map for reference purposes only. Not to scale. All information and images provided are the property of The Acorn Group and may not be used or replicated in part or full without prior permission from The Acorn Group.



